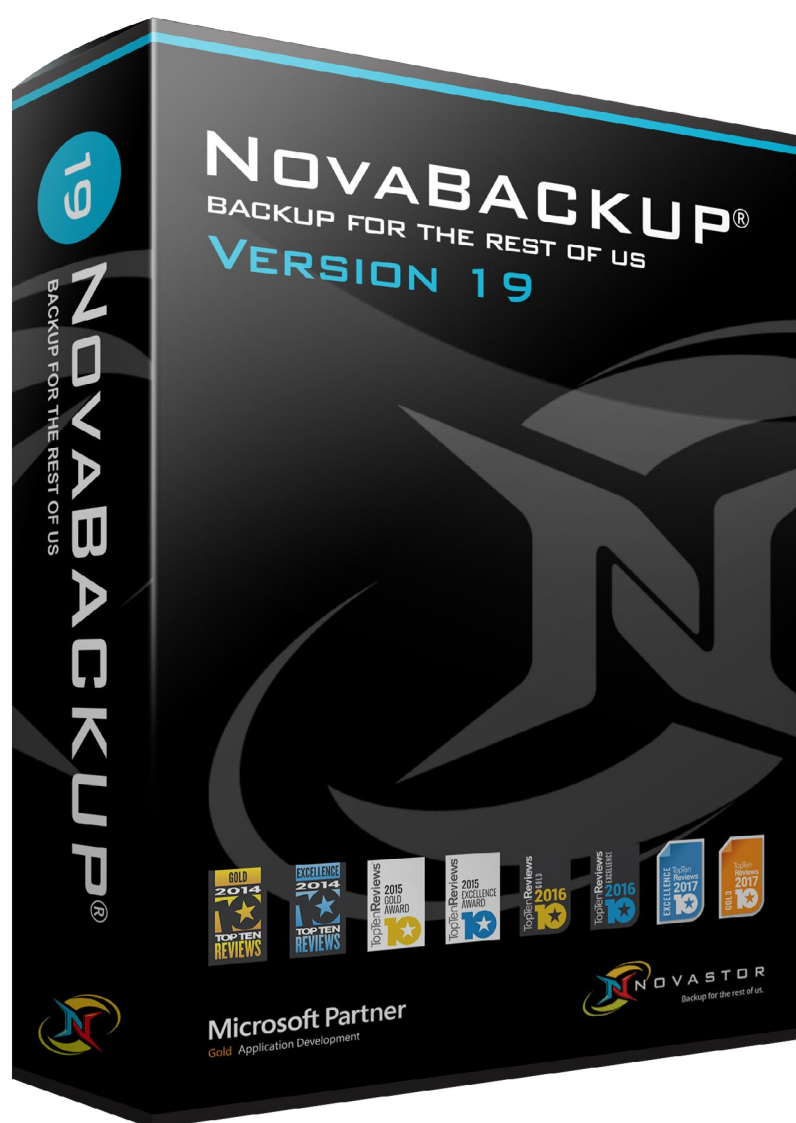


Getting Started with NovaBACKUP® 19

Backing up data - step by step



Types of Backups

File Backup

A standard file backup is simply an archive of data that may be restored in the event of data loss. This archive is generally made from the files which you select as being important (or an entire file system) and may be encrypted, or compressed.

Image Backup (Disaster Recovery)

An image backup is different than a standard file backup. It is intended to backup the underlying data structures of a computer including operating system and applications for emergency restoration in the event of a disaster. In this case your destination may be a completely different computer or set of hardware.

Types of Backup Jobs:

Full Backup

- A backup of all (selected) files on the system. This does not include file allocation tables, partition structure and boot sectors.

Once you have completed your full backup, one of the following backup types is usually employed as your daily supplemental backup.

Differential Backup

- A cumulative backup of all changes made since the last full backup.

Benefit: Only 2 files ever required to perform a restore (1 Full and 1 Differential).

Downside: Larger file sizes

Incremental Backup

- A backup that only contains the files that have changed since the most recent backup (either full or incremental).

Benefit: Small file size with incremental backups.

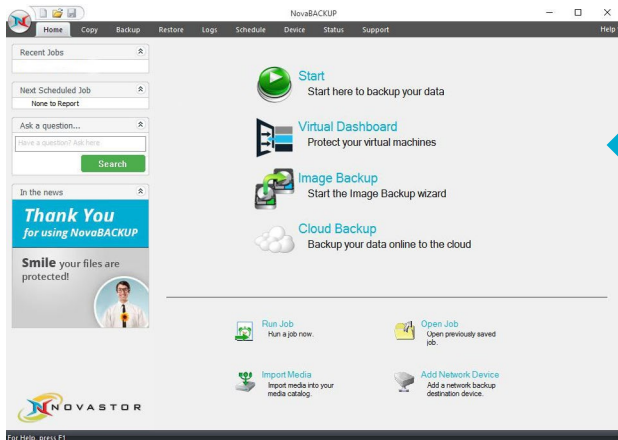
Downside: May require many files to restore which can be time consuming. More prone to user error.



Performing a File Backup

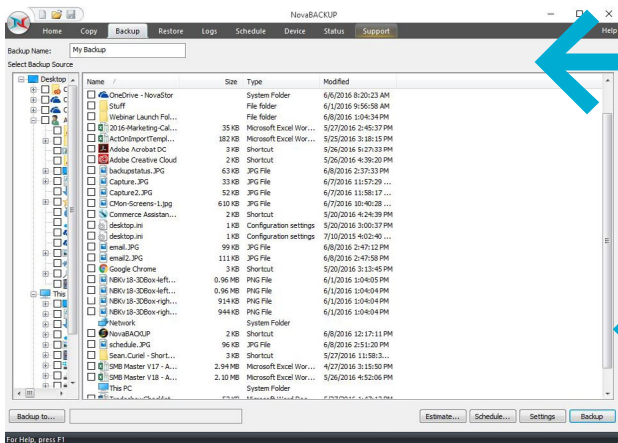
Step-by-Step Guide

Performing a File Backup



1

Begin by pressing the Start tab.

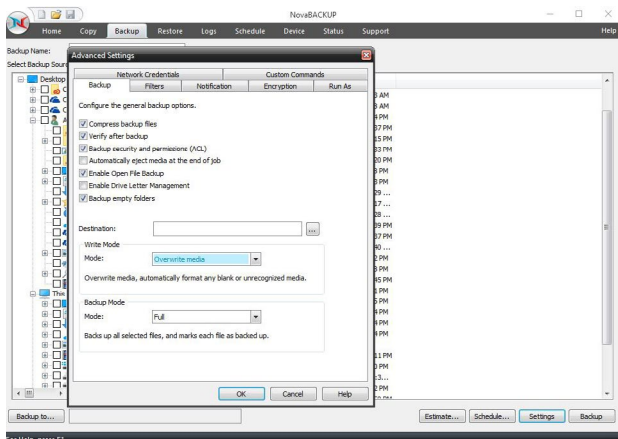


2

Enter a name you wish to call the backup job.

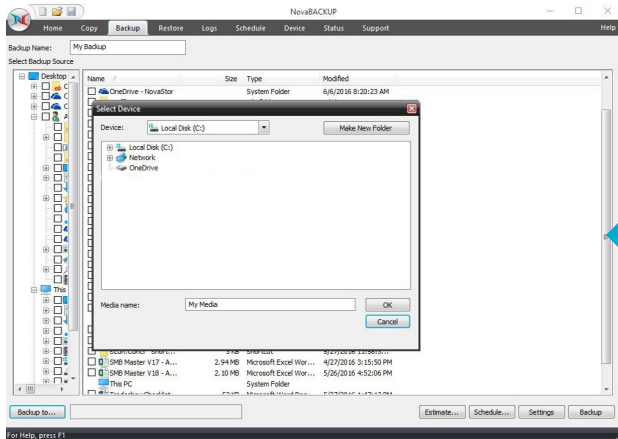
3

Select the data you wish to backup.



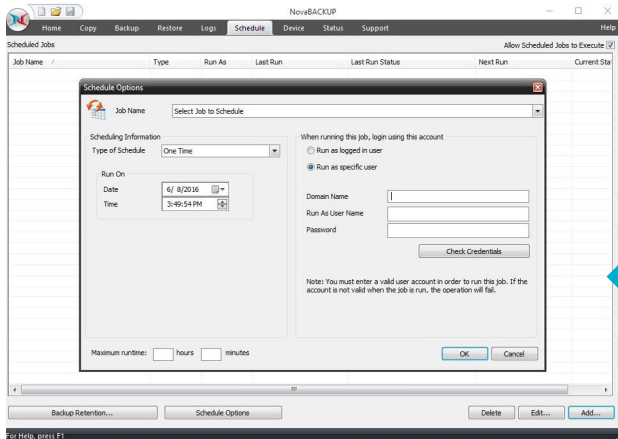
Click settings for additional options.

Performing a File Backup



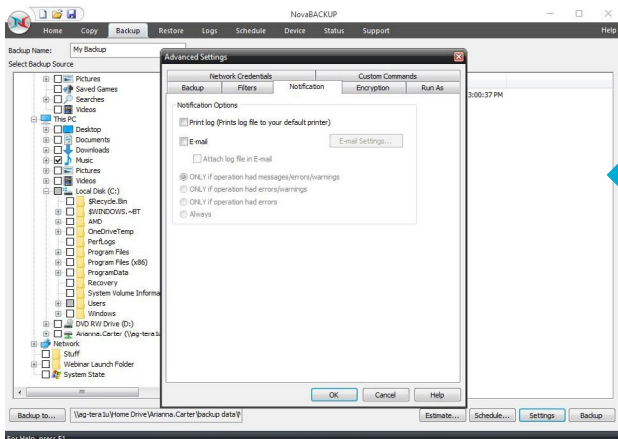
4

Select backup destination.



5

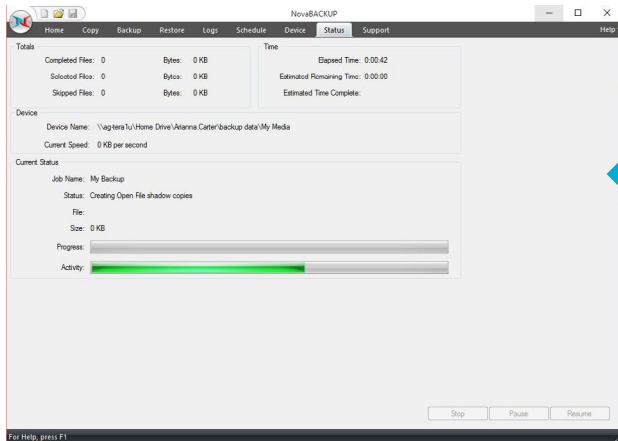
Set the schedule of the backup frequency, or disable scheduling by unchecking the checkbox.



6

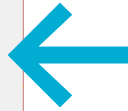
Optional: Set up customizable email alerts by clicking on the notification tab in settings.

Performing a File Backup



7

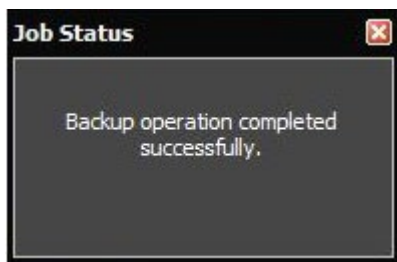
View the status of the backup job.



You may stop or pause the backup job as needed.

8

Backup was successful.

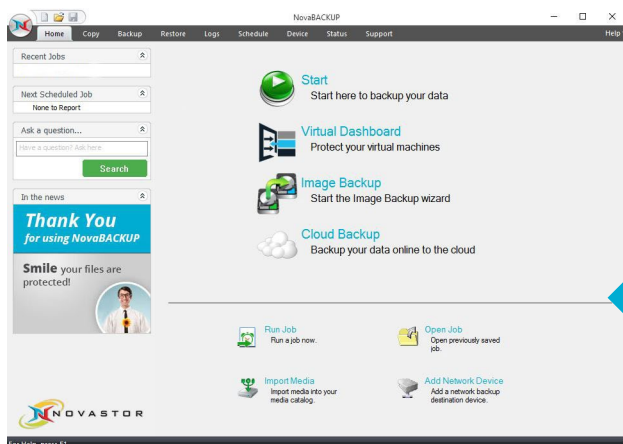




Performing a File Restore

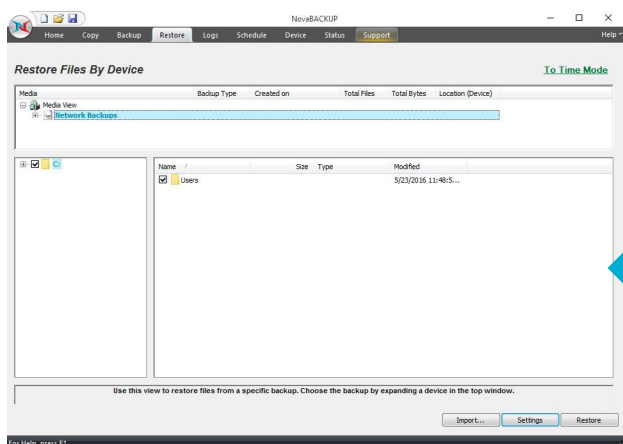
Step-by-Step Guide

Performing a File Restore



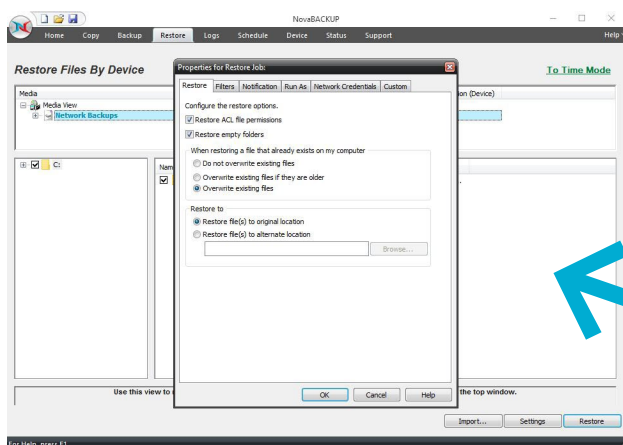
1

Select the Restore Tab.



2

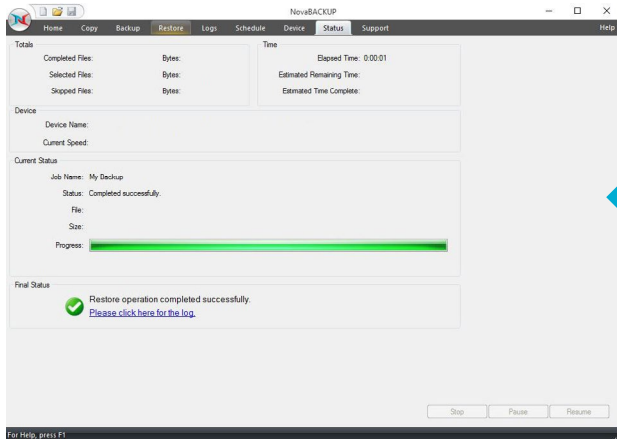
Select the data you want to restore.



3

Press settings and select a location for the restored files.

Performing a File Restore

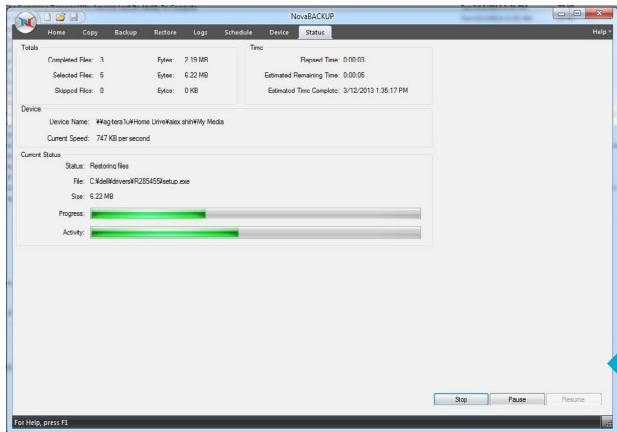


4

View the status of the Restore job.

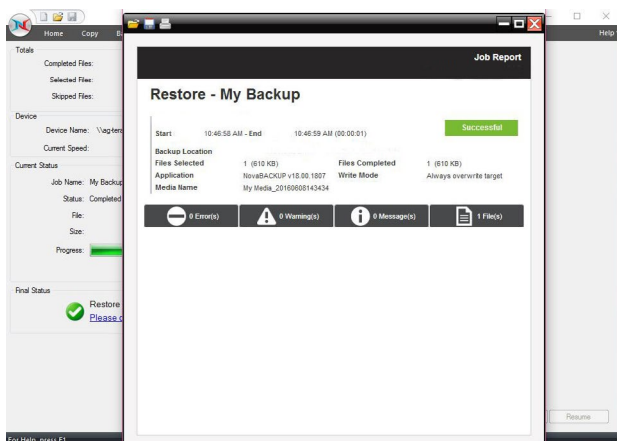
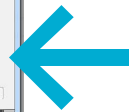


You may stop or pause the Restore job as needed.



5

You can stop or pause the restore job as needed.



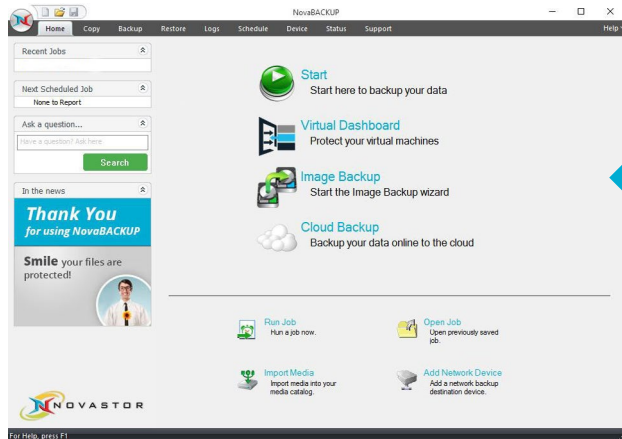
6

View the Final Status log for specifics about any Restore job.

Performing an Image Backup

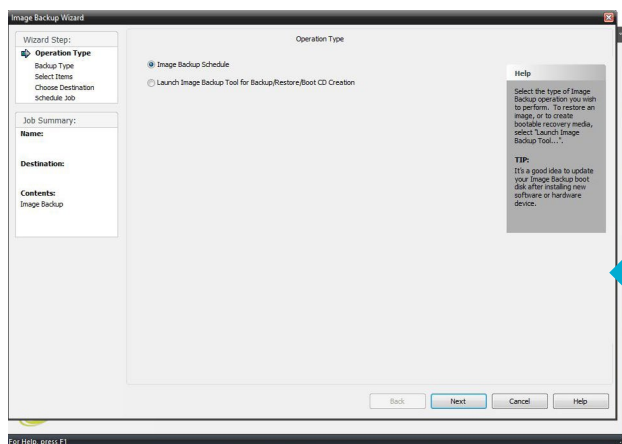
Step-by-Step Guide

Performing an Image Backup



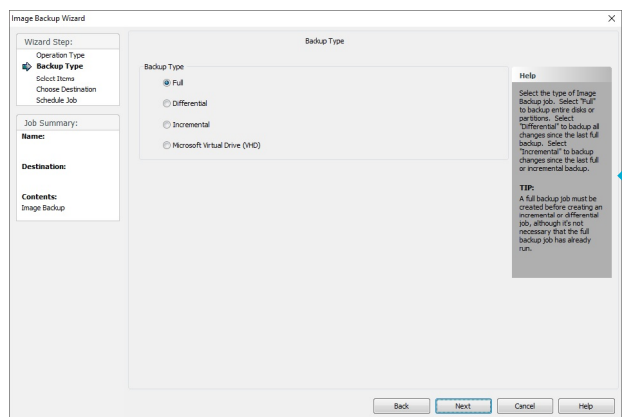
1

Select the Image Backup Wizard.



2

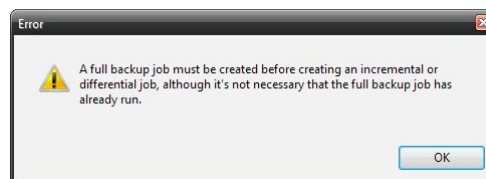
Select the Image Backup Schedule.



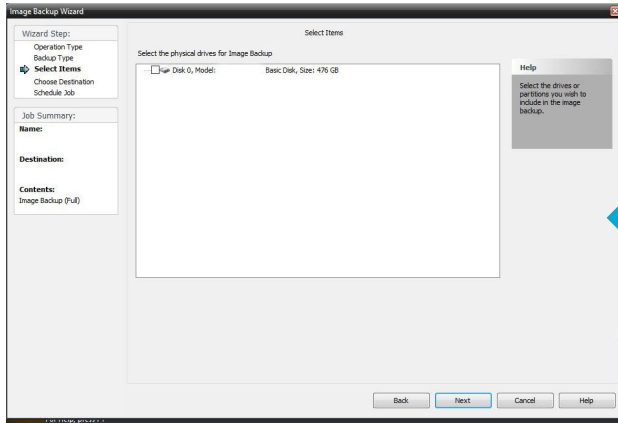
3

Select the type of backup you want.

Note: You will be unable to perform an image differential or image incremental backup until you schedule your first full image backup upon which they can be based.

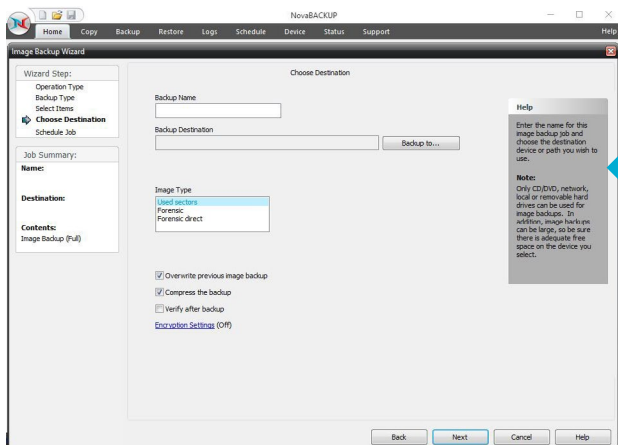


Performing an Image Backup



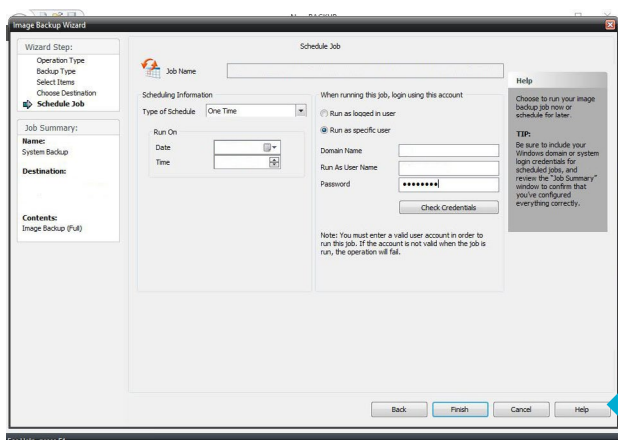
4

Select the drive you want to back up.



5

Choose a name and destination for your Image Backup.



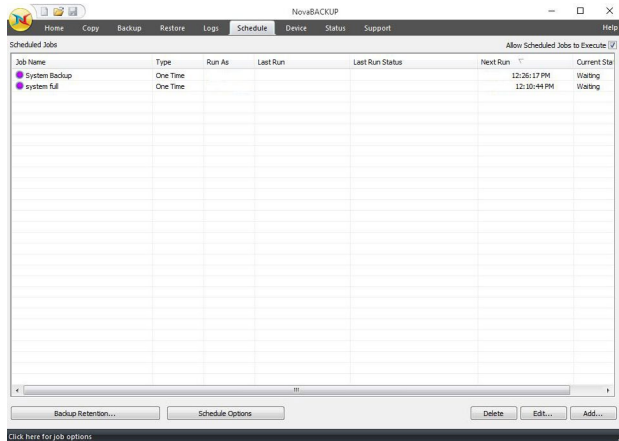
6

Schedule the Image Backup job.

Select backup name
Time/Date
and User to Run As



Performing an Image Backup



7

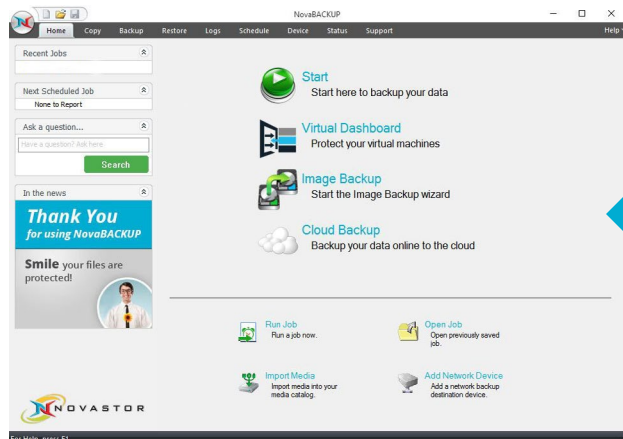
View and manage scheduled Image Backups in the Schedule Tab.



Creating Image Backup Boot Media

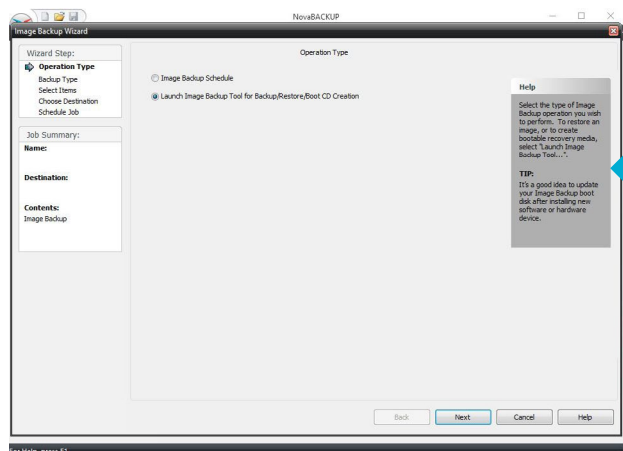
Step-by-Step Guide

Create a Image Backup Boot Media



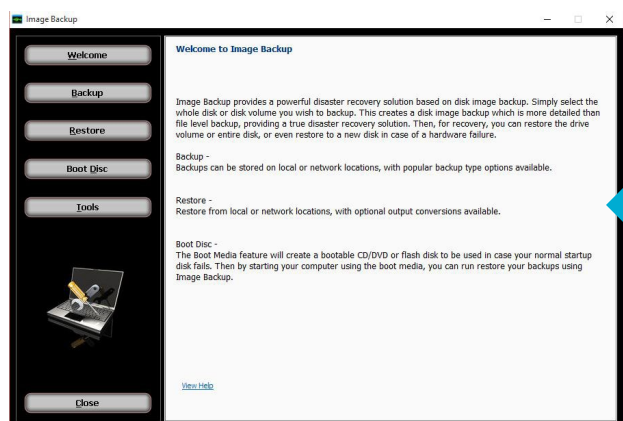
1

From the homepage, select **Image Backup**.



2

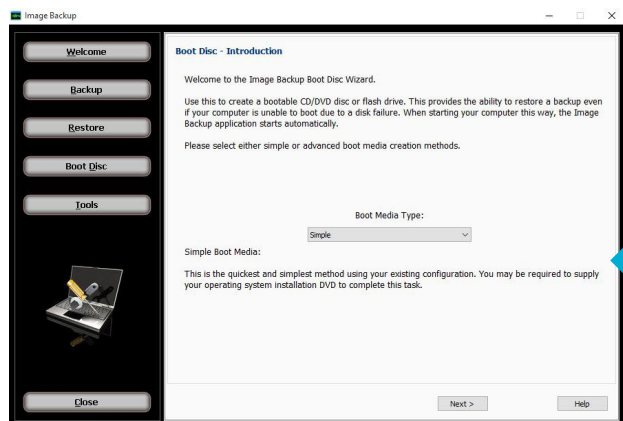
Select the **Launch Image Backup Tool** for Boot CD Creation option.



3

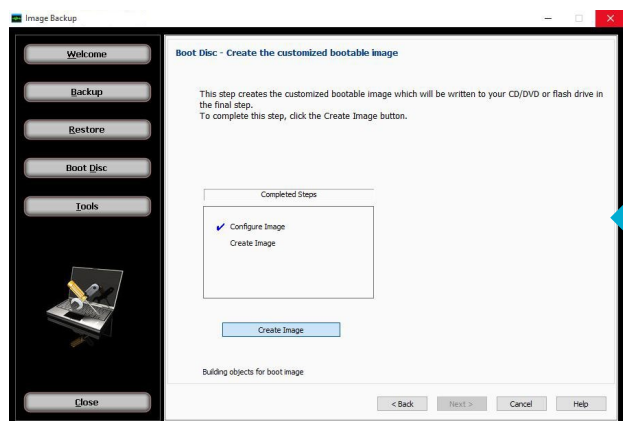
Select option for **"Boot Disc"** on the left.

Create a Image Backup Boot Media



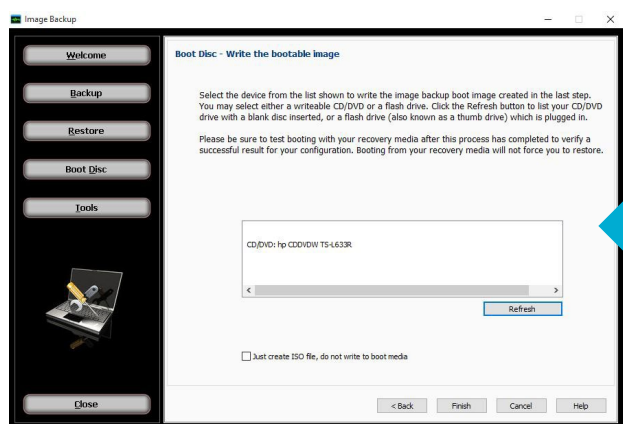
4

Choose the **Boot Media Type**. Simple is recommended for most users. Advanced is for server operating systems that need to specify RAID controller drivers. Drivers can be loaded after booting PC to the image boot media.



5

Click the **"Create Image"** button.



6

Select the **device** to write the Image Backup boot image to. This can be a USB flash drive or CD. Click "Refresh" if need be after inserting device.

Click the **"Finish"** button to start writing the boot image to the device.

About NovaBACKUP

NovaBACKUP® (www.novabackup.com) is an international provider of powerful, affordable, all inclusive data-protection solutions for physical and virtual environments. NovaBACKUP provides backup & restore solutions to small and medium business (SMB) as well as heterogeneous environments to protect data on both sides of the cloud. NovaStor's SMB solution NovaBACKUP® is rated #1 for businesses requiring local and remote protection of Windows Servers, VMware, Hyper-V and NAS environments with advanced monitoring capability, detailed reporting, and administration from a Central Management Console. NovaStor's network backup solution NovaStor DataCenter brings F500 references, scalability, reliability and speed to heterogeneous environments; a single pane of glass designed to reduce administrative effort and lower TCO. NovaBACKUP Setup Assistance is an industry first where experts relieve clients from the complexity of installation and support. NovaBACKUP is management-owned with over 1,000 partners, and millions of seats distributed. With global headquarters located in Zug, Switzerland and offices in Germany (Hamburg) and the USA (Agoura Hills), NovaStor is also represented in numerous other countries through partnerships.

For Further Information:

NovaBACKUP Corporation
29209 Canwood Street
Agoura Hills, CA 91301
Tel.: +1 (0) 805 579-6700
Fax: +1 (0) 805 579-6710

E-Mail NovaBACKUP Support

To submit your case to the NovaBACKUP Support Team visit:
support.novastor.com and [submit a ticket](#).

Live Phone Support

If you have NovaCare® Premium Support you can call our support line:
Call +1 (805) 409-3140
Press 2 for Technical Support
8am - 5pm PST

QS20170531V1SCU



www.novabackup.com

NovaStor Software AG
Baarerstrasse 20
CH-6304 Zug
Tel +41 (41) 712 31 55
Fax +41 (41) 712 31 56

NovaBACKUP Corporation
29209 Canwood Street
Agoura Hills, CA 91301 USA
Tel +1 (805) 579 6700 Fax
+1 (805) 579 6710

NovaBACKUP Europe GmbH
Marienstrasse 89 D-22041
30171 Hannover, Deutschland
Tel +49 (40) 638 09 0
Fax +49 (40) 638 09 29